

FEATURES

The Biotechnic Aseptic Sampling Valve VPA features a radial diaphragm and a very compact design that allows for the valves installation in confined areas on sanitary vessels or product lines in pharmaceutical applications.

ZERO DEAD LEG

The Radial Diaphragm closes at the inlet seat of the product port connection, eliminating the typical dead leg. Contamination is avoided, and uncontrolled bacteria growth is eliminated.

VALVE BODY

The two-piece valve body is machined from solid bar stock AISI 316L stainless steel. The product inlet port is available with butt weld end or 1" sanitary clamp end. Other product inlet connections available upon request.

The sample and optional steam port is available with sanitary clamp or hose barb. Other connections available upon request.

ACTUATORS

Hand operated, adjustable, autoclavable knob with position indicator.

Hand operated, On/OFF toggle lever.

Pneumatic actuator (single acting, spring close) in stainless steel.

COMPLIANCE, APPROVALS AND VALIDATION DOCUMENTATION

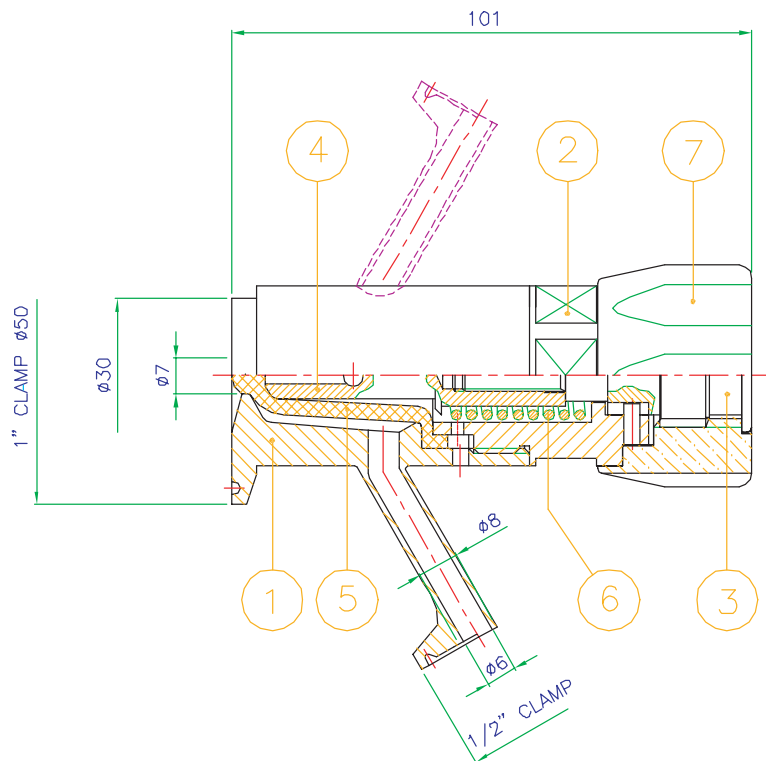
Full material traceability on all valves. To assist in validation processes, Material Test Reports (MTR), FDA Regulations Compliance Certificates, and manufactures Certificate of Surface Finish are available upon request.

STERILE SAMPLING

Developed for sterile sampling. The valves aseptic design and configurations assures effective cleaning (CIP) and sterilization (saturated steam) of all product contact surfaces and the radial diaphragm.

IMPORTANT !

Assure that the maximum system pressure does not exceed the operating pressure of the valve.



MATERIALS OF CONSTRUCTION

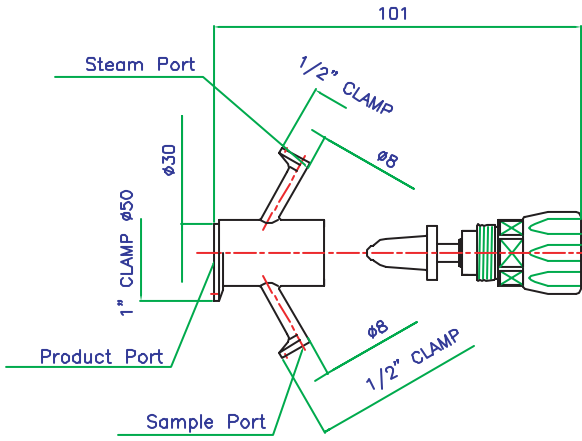
- 1 Body AISI 316L
- 2 Cover AISI 316L
- 3 Valve Stem AISI 316L
- 4 Valve cone AISI 316L
- 5 Radial Diaphragm – Silicone or PTFE
- 6 Spring AISI 304
- 7 Knob PTFE, autoclavable

OPERATING CONDITIONS

Pressure = max. 8 bar
Temperature Range = -30°C to +150°C
Flow = max. 1.200 lt/hr @ (2 bar)

SURFACE FINISHES

External Mirror Polish
Internal Mechanical Polish 240 Grit

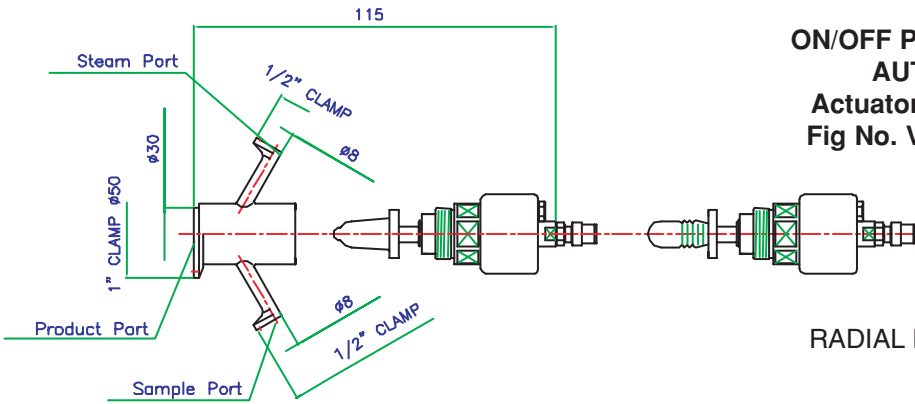


ADJUSTABLE KNOB FOR MANUAL OPERATION

Completely autoclavable

Fig. No. VPA-SS-ETC/UTC/SK2-8SM

RADIAL DIAPHRAM: **SILICONE** or **PTFE**

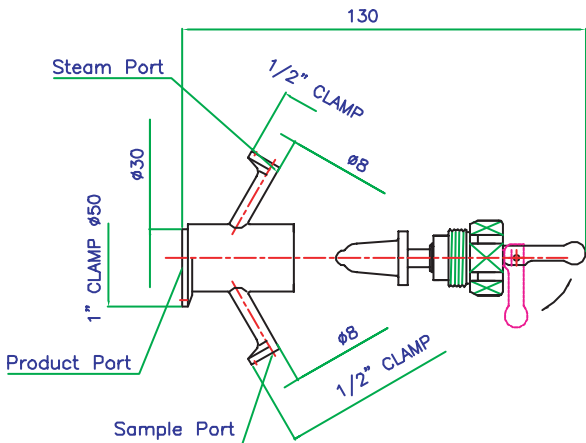


ON/OFF PNEUMATIC ACTUATOR FOR AUTOMATIC OPERATION

Actuator housing in stainless steel

Fig No. VPA-SS-ETC/UTC/SK2-8TP1

RADIAL DIAPHRAM: **SILICONE** or **PTFE**



ON/OFF TOGGLE LEVER FOR MANUAL OPERATION

Fig. No. VPA-SS-ETC/UTC/SK2-8STG

RADIAL DIAPHRAM: **SILICONE** or **PTFE**

PORT CONFIGURATION

